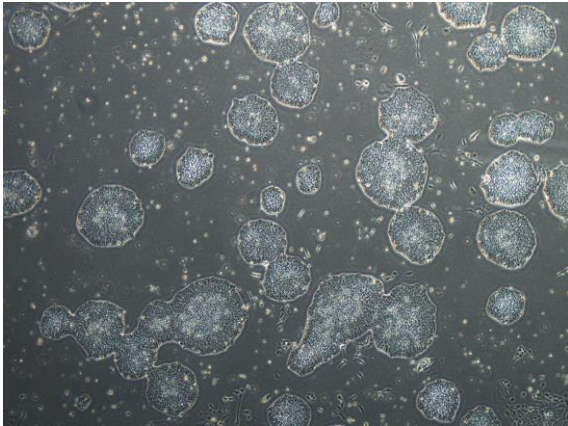
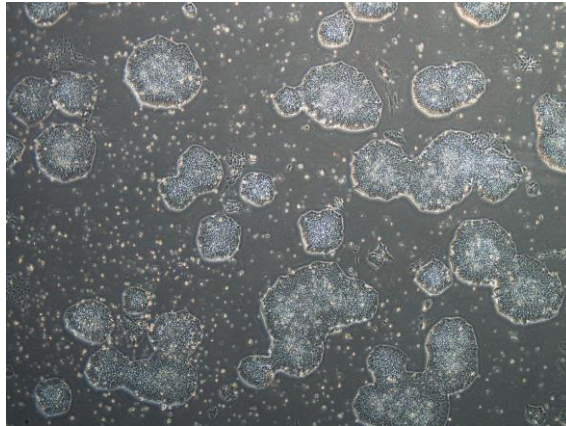


## 【 CiRA-j-1248 】 Morphology of iPSC colonies

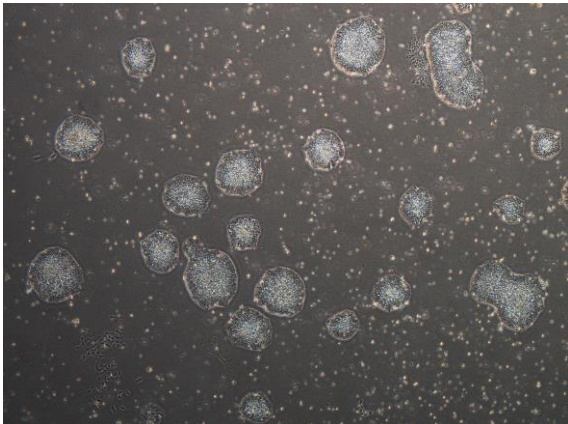
CiRA-j-1248-A: passage-3



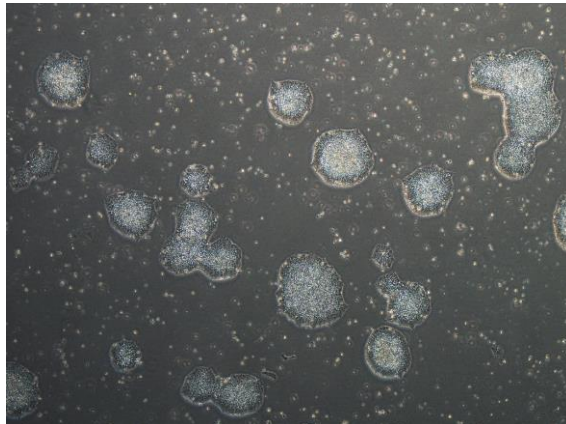
CiRA-j-1248-B: passage-3



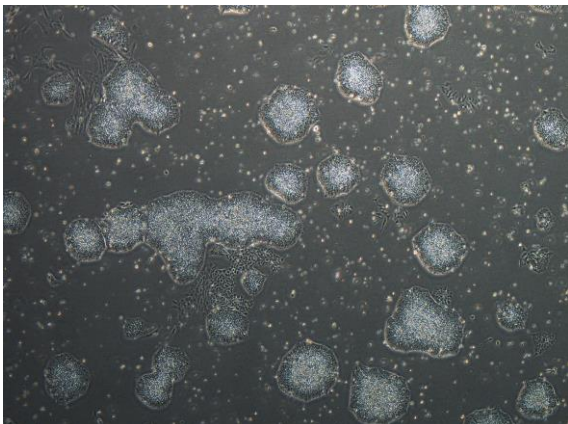
CiRA-j-1248-C: passage-3



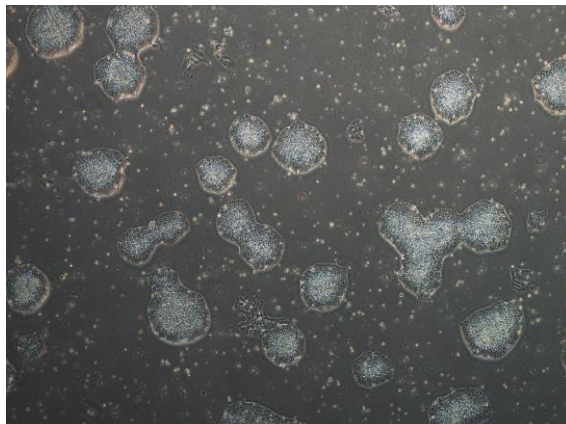
CiRA-j-1248-D: passage-3



CiRA-j-1248-E: passage-3



CiRA-j-1248-F: passage-3



( All images were captured at 4x magnification )